

# Devolutions

Knowledge Base

---

**Execute & Export  
Reports**



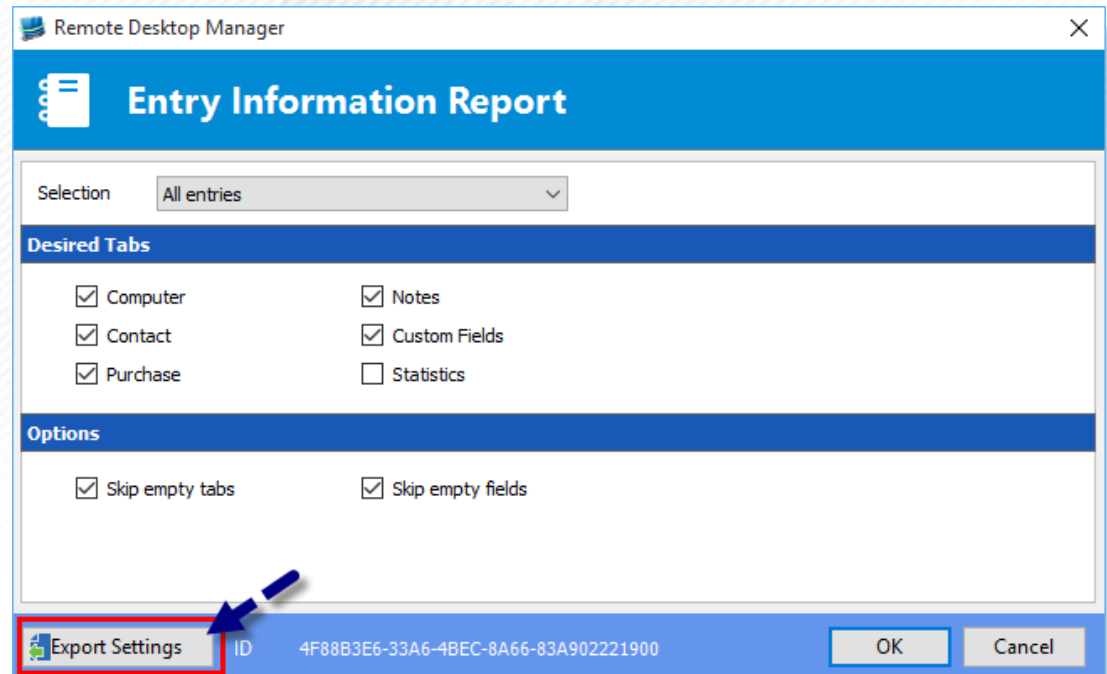
# Execute & Export Reports

- The Export Reports is a way to execute and export reports through a command line. You can use this feature in a shortcut or in a batch file and use the Windows task scheduler to execute it.



# Step 1

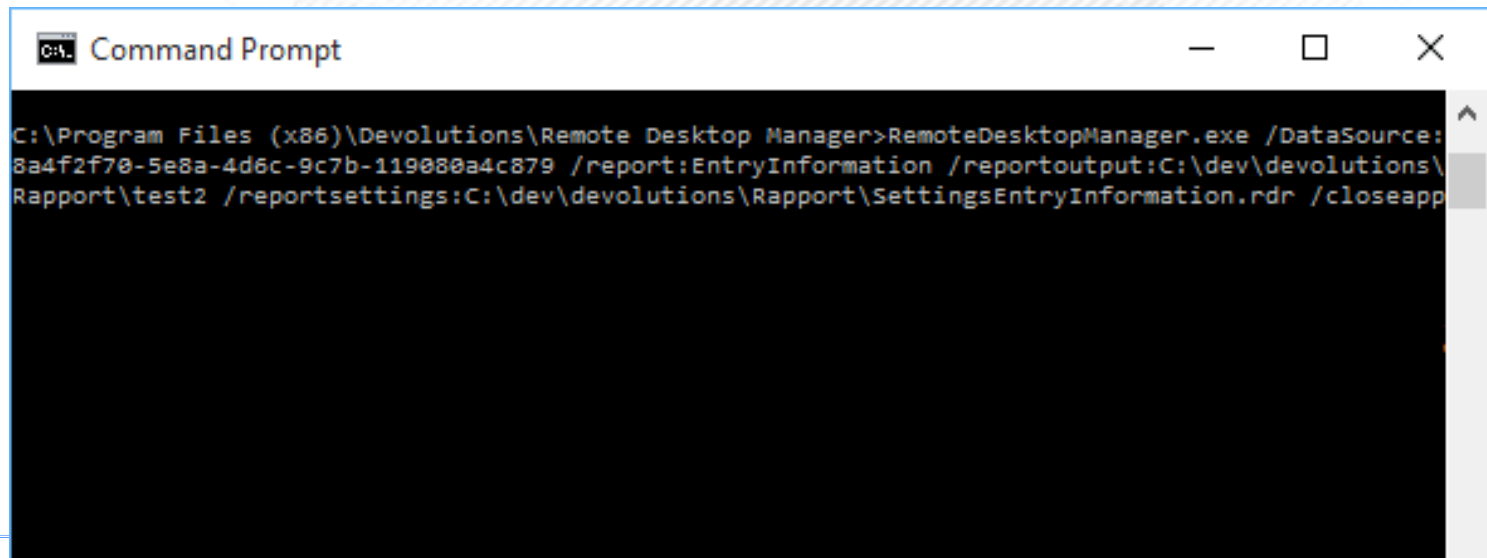
- Export your report settings in an **.rdr** file.  
In **Administration – Report – select your report – Export Settings**.



# Step 2

- Open your Windows Command Prompt and enter the following command :

```
C:\***\RemoteDesktopManager.exe  
/DataSource:*** /report:*** /reportoutput:***  
/reportsettings:*** /closeapp
```



The screenshot shows a Windows Command Prompt window titled "Command Prompt". The command entered is: `C:\Program Files (x86)\Devolutions\Remote Desktop Manager>RemoteDesktopManager.exe /DataSource:8a4f2f70-5e8a-4d6c-9c7b-119080a4c879 /report:EntryInformation /reportoutput:C:\dev\devolutions\Rapport\test2 /reportsettings:C:\dev\devolutions\Rapport\SettingsEntryInformation.rdr /closeapp`. The command is shown on multiple lines, with a cursor at the end of the last line.

# Step 2

- Here are some details regarding the Command line:

```
C:\***\RemoteDesktopManager.exe  
/DataSource:*** /report:*** /reportoutput:***  
/reportsettings:*** /closeapp
```

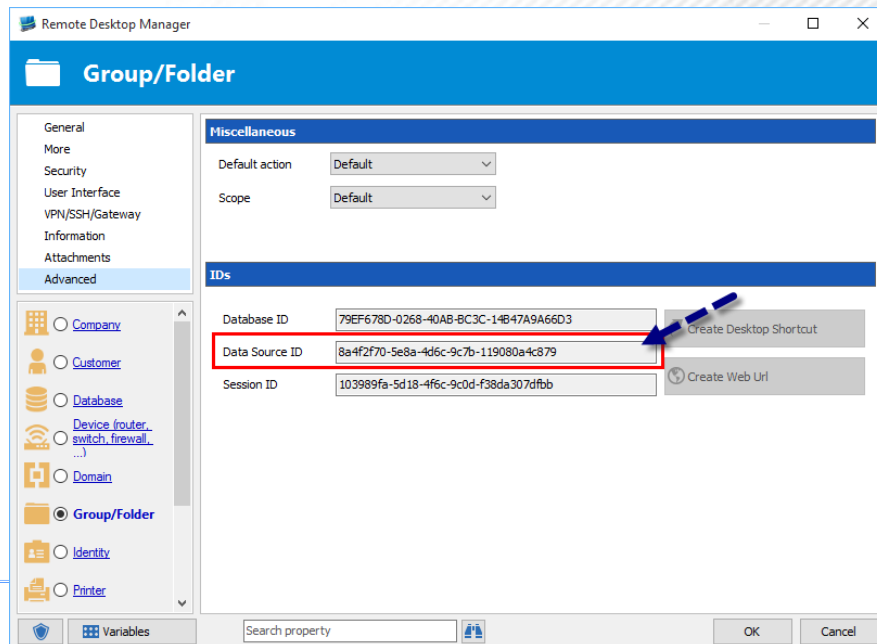
This will be the path leading to your **RemoteDesktopManager.exe file**. It will be used to open your application.

**Ex:** C:\Program Files (x86)\Devolutions\Remote Desktop Manager\RemoteDesktopManager.exe

# Step 2

- Here are some details regarding the Command line:

```
C:\***\RemoteDesktopManager.exe  
/DataSource:*** /report:*** /reportoutput:***  
/reportsettings:*** /closeapp
```



Specify your  
DataSource ID.  
You can find this  
information in your  
**Session – Edit –  
Advanced –  
Data Source ID**

# Step 2

- Here are some details regarding the Command line:

```
C:\***\RemoteDesktopManager.exe  
/DataSource:*** /report:*** /reportoutput:***  
/reportsettings:*** /closeapp
```

Specify the name of the report you wish to generate or the report ID. The report ID can be found in **Administration – Report – Select your report – ID.**

Please refer to our Online Help for an exhaustive list of the Report names for command line.



# Step 2

- Here are some details regarding the Command line:

```
C:\***\RemoteDesktopManager.exe  
/DataSource:*** /report:*** /reportoutput:***  
/reportsettings:*** /closeapp
```

Path of the location to save your file report and report name.

**Ex:** C:\dev\devolutions\Rapport\rapportEntry



# Step 2

- Here are some details regarding the Command line:

```
C:\***\RemoteDesktopManager.exe  
/DataSource:*** /report:*** /reportoutput:***  
/reportsettings:*** /closeapp
```

Path of the location of the setting file (rdr.file)

**Ex:** C:\dev\devolutions\Rapport\SettingsEntryInformation.rdr

# Step 2

- Here are some details regarding the Command line:

```
C:\***\RemoteDesktopManager.exe  
/DataSource:*** /report:*** /reportoutput:***  
/reportsettings:*** /closeapp
```

Closeapp command will automatically close the application once the report is generated only if the application was lauch through command line.

# Devolutions

Devolutions is the creator of **Remote Desktop Manager**, a tool to manage remote access technologies, credentials, and **VPNs**.



**Remote Desktop  
Manager**

---

Visit us at: [devolutions.net](https://devolutions.net)

