



How to Configure Devolutions Web Login in Microsoft Edge



YOU CAN NOW ADD CHROME EXTENSIONS TO EDGE

Have you ever wanted to switch from Chrome to Microsoft Edge, but couldn't because Devolutions Web Login wasn't available on Edge? Well, good news everyone! You can now add Chrome extensions to Edge.

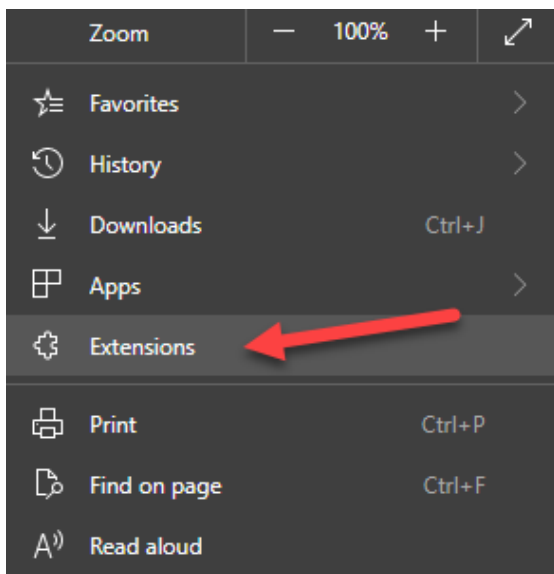
Today, we're going to look at how to inject credentials in Edge using the Devolutions Web Login (DWL) extension for Chrome.

Never heard about Devolutions Web Login?

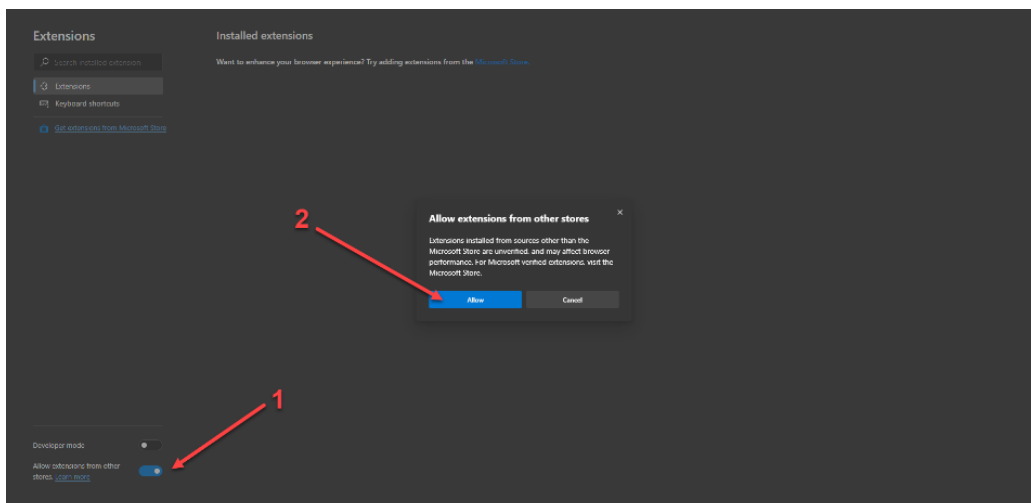
Devolutions Web Login is a web browser extension used to retrieve credentials from a client application or a remote server, such as [Remote Desktop Manager](#), [Devolutions Password Server](#) or [Devolutions Password Hub](#). Once properly installed and connected to a source of data, Devolutions Web Login will automatically obtain credentials to log you in to any website. Really useful and time saving, right?

Here are the steps to use Devolutions Web Login on Edge:

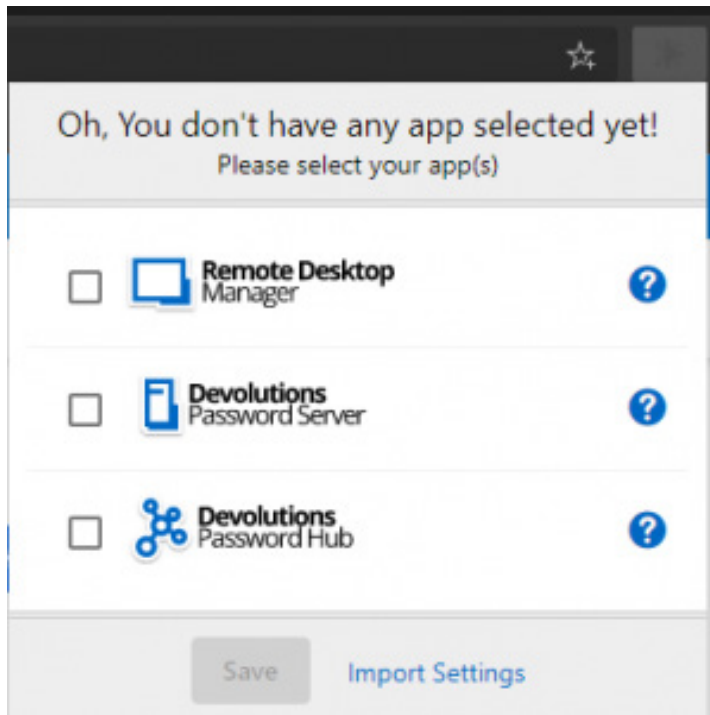
- Start by making sure you have the [latest version](#) of Edge.
- Go to the Extensions Manager (“...” > Extensions)



- Turn on “Allow extension from other stores” (see #1 below)
- Click **Allow** to “Allow extensions from other stores” (see #2 below)



- Go to the [Devolutions Web Login Google Extensions Store page](#). Click **Add to Chrome** and then click **Add Extension**
- Click on the Devolutions Web Login icon, select the credential source, and then import the settings.



And that's all there is to it! You can keep using Edge, while enjoying all the benefits of Devolutions Web Login.

If you need help setting things up, don't hesitate to contact our experts through [chat](#) or [email](#).

And if you're not yet using Remote Desktop Manager, Devolutions Password Server or Devolutions Password Hub, then contact our friendly team at sales@devolutions.net, and they'll happily answer your questions.