



## Improved Remote Desktop Manager 13.5 Feature: Repositories



---

### MY FAVORITE FEATURES IN REMOTE DESKTOP MANAGER: REPOSITORIES

---

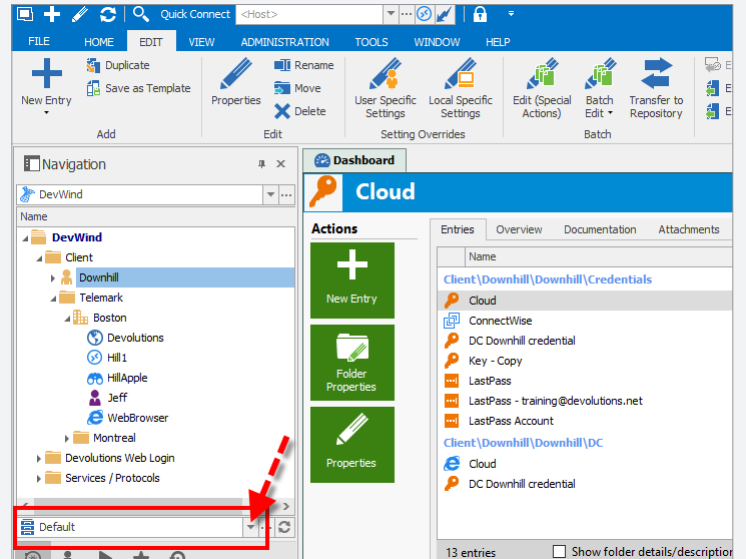
A few months ago, [I wrote about](#) one of my favorite features in Remote Desktop Manager: repositories. These wonderful things are basically smaller compartments in a

single database, and they make it easy to manage a large number of entries without diminished performance. Plus, since you technically aren't breaking up the database, you can still maintain a single set of users, security groups and roles — which means less administration. How great is that?

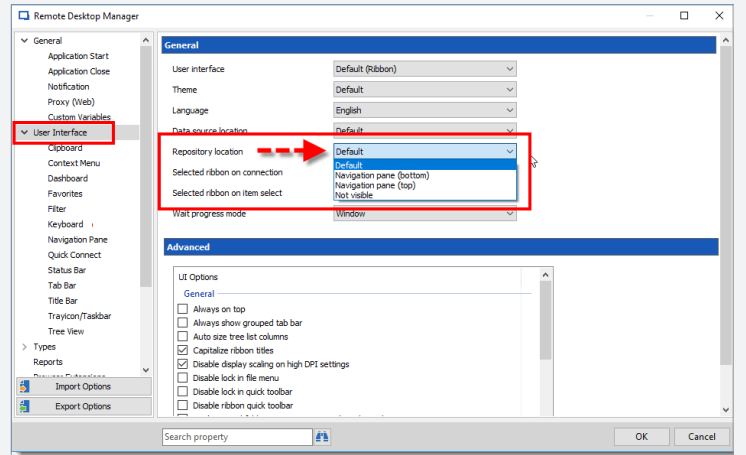
Since I know that many of you love repositories as much as I do, you'll be happy to know we've made some improvements and this feature is now even better! Here's what you can look forward to in Remote Desktop Manager 13.5:

# Repositories Dropdown Menu

In the past, when switching between repositories, you had to click the database ellipsis, scroll down the list of all databases, select the database repository you wanted to use, and click OK. No, it wasn't a difficult task. But it wasn't all that efficient either. So we've tightened up the workflow. Now, you can rapidly switch between repositories using the repository dropdown menu, which is at the bottom of the navigation pane.

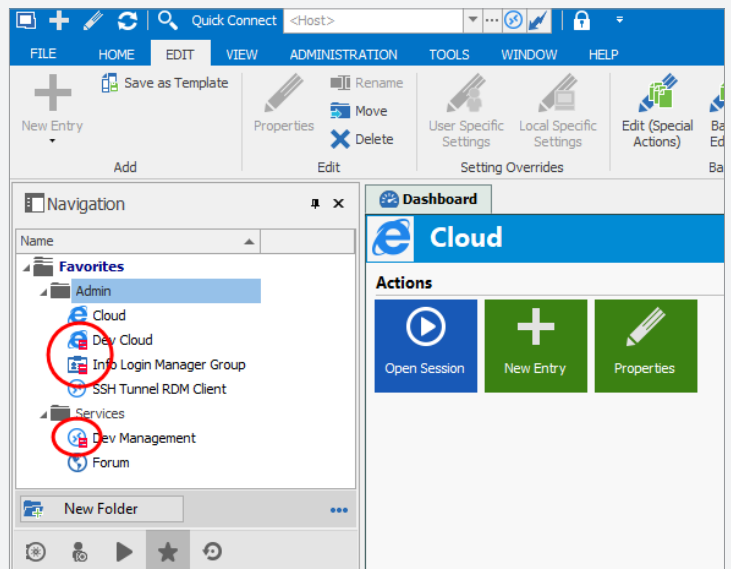


Also note that you can easily change the location of the new dropdown menu by going to: **File – Options – User Interface – Repository location**.



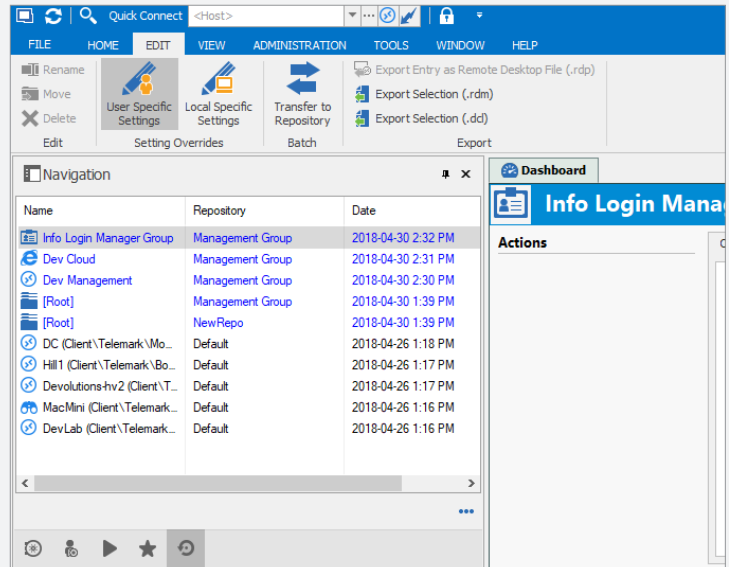
# Cross-Repository Favorites

You told us what you wanted, and we listened: now when you access your Favorites folder, all of the entries you've marked as "favorite" will appear, regardless of the repository that it's stored in. We've also added a red icon that tells you when an entry belongs to another entry (i.e. not the one that is currently active).



# Multi-Repository Support for MRU

The most recently used entries (MRU) list is now supported across all repositories. Simply click on **Recent** in your Navigation pane to see the MRUs, as well as the repository in which the entry is stored.



I hope you enjoy those new improvements to the repositories. Please let us know what you think by commenting below. As always, our focus is on making your life easier and more efficient, so that you have time for more important priorities (like playing [Fortnite!](#)).

As always, please let us know your thoughts by using the comment feature of the blog. You can also visit our forums to get help and submit feature requests, you can find them [here](#).