



## Improved Remote Desktop Manager Feature: Inventory Reports



---

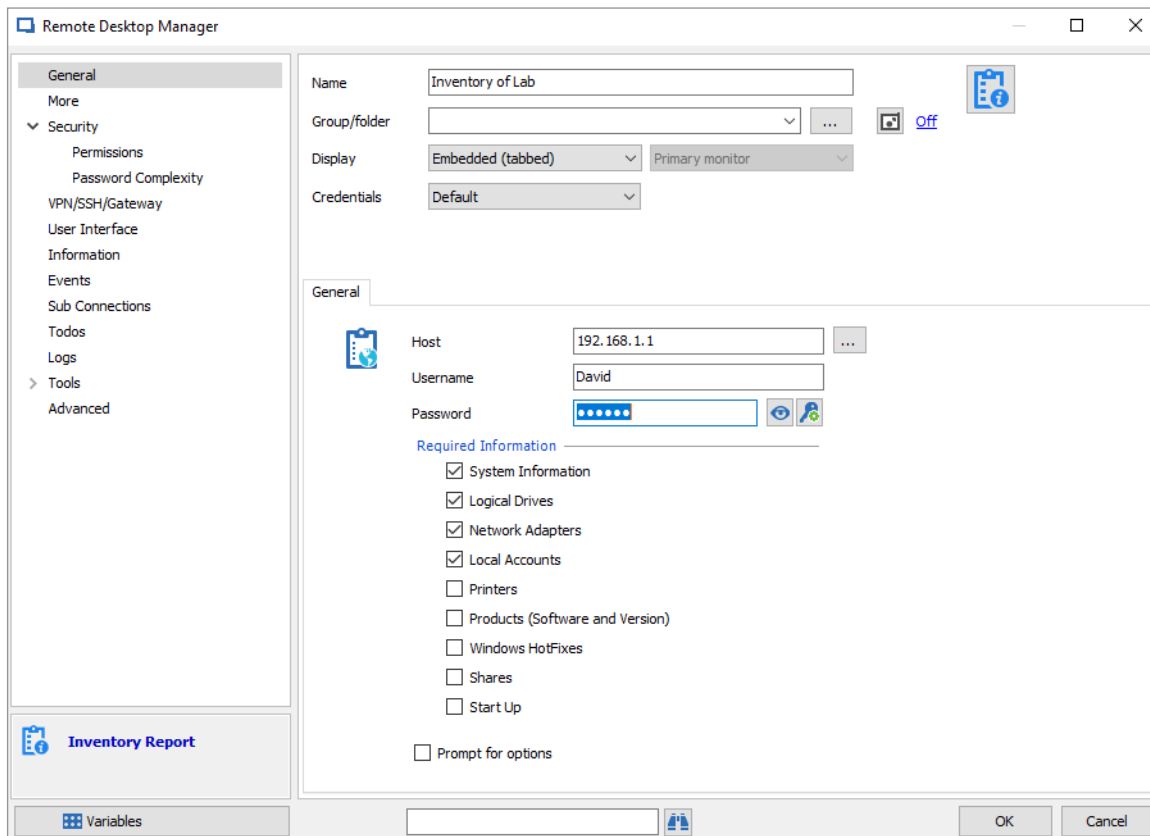
**WE'RE HARD AT WORK MAKING  
REMOTE DESKTOP MANAGEMENT  
LOOK EVEN BETTER**

---

Summer is here, which means folks are trying to look their best. Time to work out, diet, and get a new hairdo!

Well, here at Devolutions, instead of working on our tan or hair, we're hard at work making Remote Desktop Management look even better. And that's why the latest version [12.5](#) includes several improvements; one of my favorites is the update we've made to the [Inventory Report](#).

The Inventory Report, which is located under **Tools – My Inventory**, lets you choose from a list of required information (see screenshot below). It then generates a report detailing the inventory of your host computer.



## What's New

Each inventory report in RDM 12.5 now includes added details such as:

- MacOS support (inventory from a Mac)
- GPU
- Monitors
- Printers
- Memory
- Start-up applications
- Motherboard
- Inventory History

Once you've generated your inventory report, you'll be able to view it in a list format or as a standard report. You can then print or save it for future reference.

The image shows two screenshots of the 'Inventory Report of localhost' application. The top screenshot displays a tree view of system properties, and the bottom screenshot shows a detailed report window.

**Inventory Report of localhost - Tree View**

Property	Value
Computer	
Bios	
OS	
Build number	14393
Name	Microsoft Windows 10 Enterprise
CSName	
Description	10.0.14393 Build 14393
Free physical memory	4.4 GB
Free virtual memory	3.9 GB
Install date	9/27/2016 9:31:26 AM
Last boot up time	5/13/2017 11:13:12 AM
Name	Microsoft Windows 10 Enterprise
Major	10
Manufacturer	Microsoft Corporation
Minor	0
Name	Microsoft Windows 10 Enterprise
Name	Microsoft Windows 10 Enterprise
Service pack major version	0
Service pack minor version	0
Size stored in paging files	1.2 GB
Total virtual memory size	9.0 GB
Total visible memory size	7.8 GB
Version	10.0.14393
Windows directory	C:\WINDOWS
Motherboard	
Processor	
Memory	8.0 GB
CD Rom	
Sound	
Video	
Monitors	
Devices	
Logical Drives	
Network Adapters	
Local Accounts	

**Inventory Report of localhost - Detailed Report**

**System Information**

Domain	WORKGROUP
Manufacturer	Parallels Software International Inc.
Model	Parallels Virtual Platform
Number of processors	1
System type	x64-based PC
Time Zone	(UTC-05:00) Eastern Time (US & Canada)
<b>Bios</b>	
Caption	Default System BIOS
Manufacturer	Parallels Software International Inc.
Release date	9/26/2016 8:00:00 PM
Serial number	
SMBIOS Version	11.2.2 (32651)
<b>OS</b>	
Build number	14393
CSName	
Description	10.0.14393 Build 14393
Free physical memory	4.4 GB
Free virtual memory	3.9 GB
Install date	9/27/2016 9:31:26 AM
Last boot up time	5/13/2017 11:13:12 AM
Major	10
Manufacturer	Microsoft Corporation
Minor	0
Service pack major version	0
Service pack minor version	0
Size stored in paging files	1.2 GB
Total virtual memory size	9.0 GB
Total visible memory size	7.8 GB
Version	10.0.14393
Windows directory	C:\WINDOWS
<b>Motherboard</b>	
Manufacturer	Parallels Software International Inc.
Product	Parallels Virtual Platform
Serial number	None
Version	None
<b>Processor</b>	

As always, please let us know your thoughts by using the comment feature of the blog. You can also visit our forums to get help and submit feature requests, you can find them [here](#).