

[New Feature Spotlight] Quick Connect in RDM 2021.1 for Linux



THE KEY NEW FEATURES IN REMOTE DESKTOP MANAGER 2021.1

Let's start with some Q&A:

- Who has the highest rank in the Linux military? The kernel!
- What is a Linux user's favorite game? sudo ku!
- Why are Linux geeks usually introverts? Because they never get out of their shell!

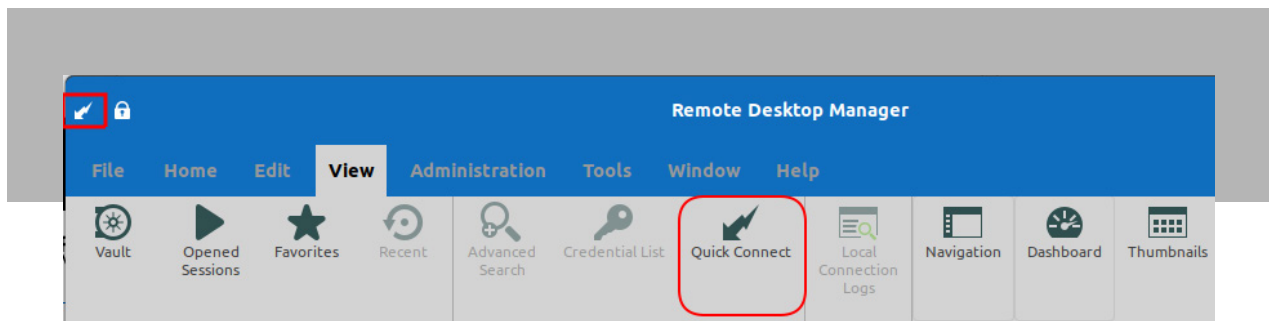
Now, if none of the above make any sense to you, then the rest of this article is not going to be of interest. But if you found yourself laughing (or probably groaning) at the above, then not only are you a Linux fan, but you'll want to stick around because **today we are looking at one of the key new features in Remote Desktop Manager 2021.1 for Linux: Quick Connect.**

About Quick Connect

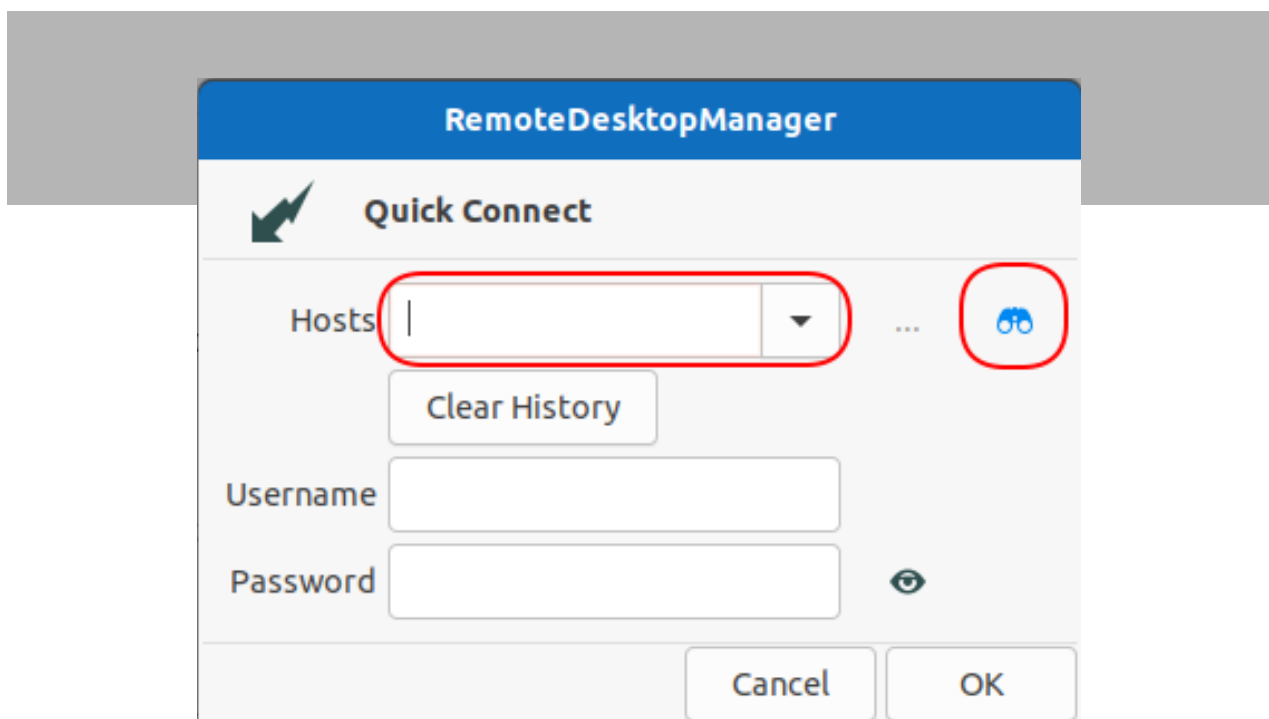
Via the **Quick Connect** feature, you can now rapidly open an ad hoc session by specifying the host and session type. And it gets even better: if your current data source has saved templates, then those are available as well!

Using Quick Connect

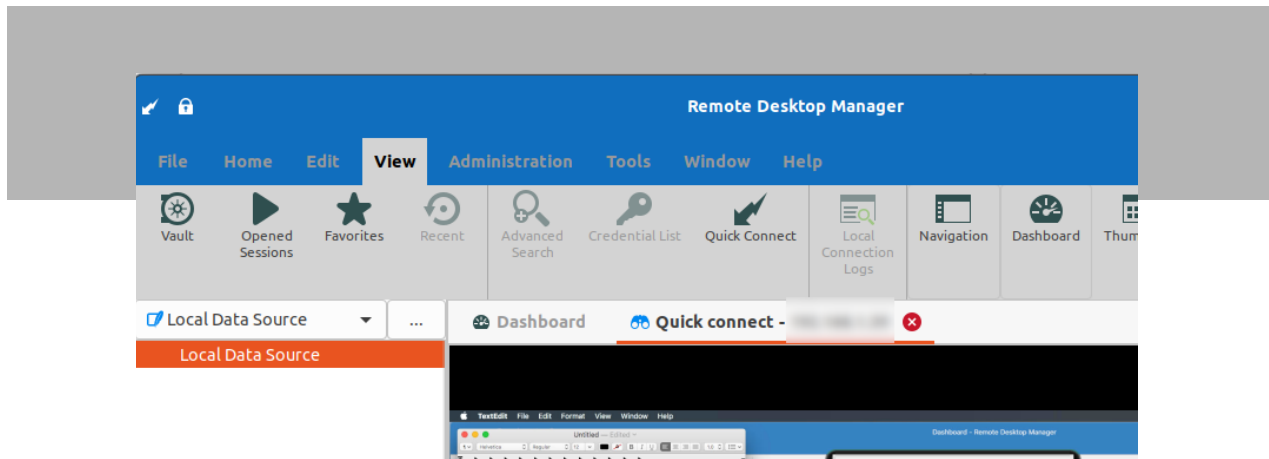
The **Quick Connect** feature is accessible from the menu **View - Quick Connect**, or via the **Quick Connect** icon located in the Remote Desktop Manager for Linux toolbar.



Once you click the button, simply enter the host (IP address), username, and password. If you wish, you can also select a previous host name by clicking the down arrow.



Finally, click OK and the connection to the remote computer will be established.



We hope that you find this new feature easy-to-use, and that it makes your work more efficient — because as we all know, in the IT world the most precious thing is TIME. The more you save, the more you have to take care of emergencies and priorities, and yes, maybe even have a minute or two to enjoy some Linux jokes. Want another? OK, here you go:

A little girl asked her geeky dad what clouds are made of.

His response?

“Mostly Linux servers.”

