



## New Remote Desktop Manager Feature: Time-Based Usage



[Remote Desktop Manager 13](#) is here, and there are several new features to explore — including one of my favorites: time-based usage.

---

### WHAT IS TIME-BASED USAGE?

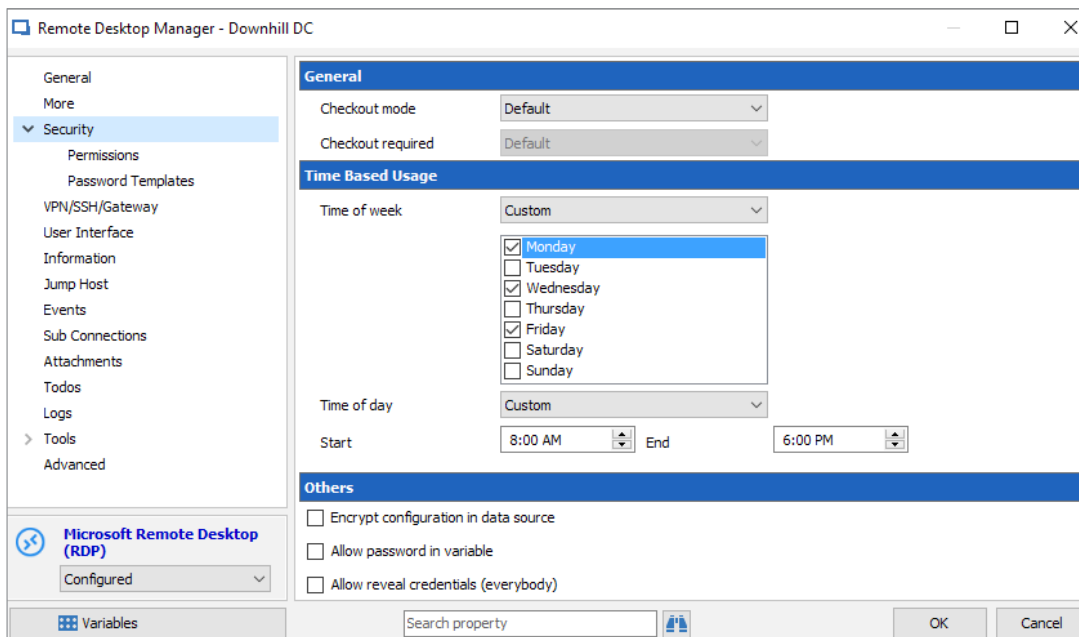
---

The time-based usage feature lets you specify when users of a **Microsoft SQL Server** or [Devolutions Server](#) data source can access specific sessions. Please note that this feature requires an online connection and isn't supported in offline mode.

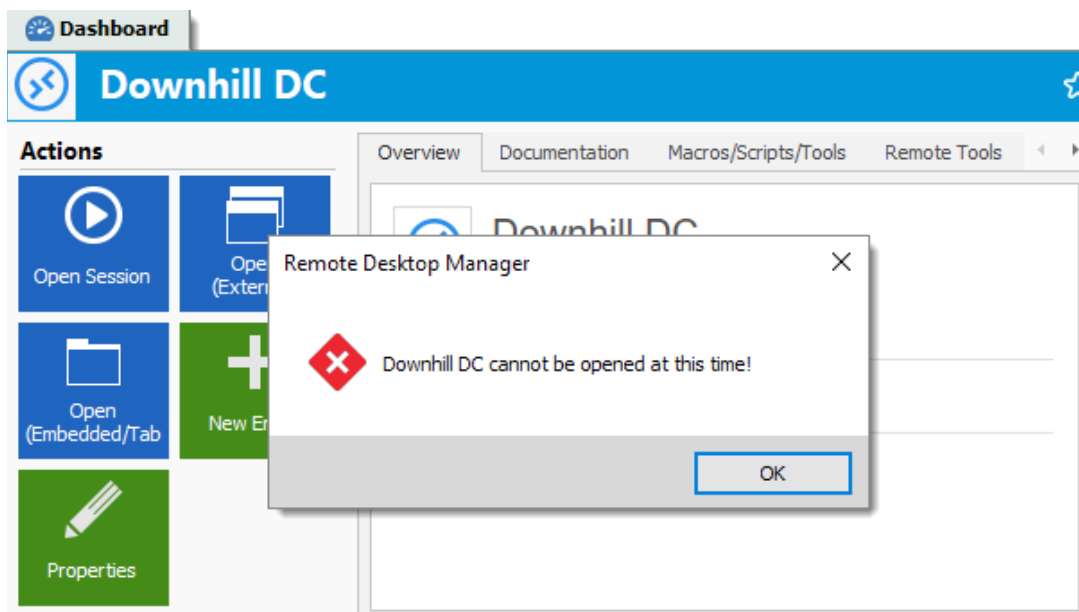
## How to Setup Time-Based Usage

- **Edit** a session.
- Navigate to **Security**.
- For the **Time of week** setting, select **which days the resource is available**.
- For the **Time of day** setting, **limit the usage of the resource to specific hours**.

For example, in the following screenshot, access to the session “Downhill DC” is being restricted to Monday, Wednesday and Friday from 8:00am to 6:00pm (each day):

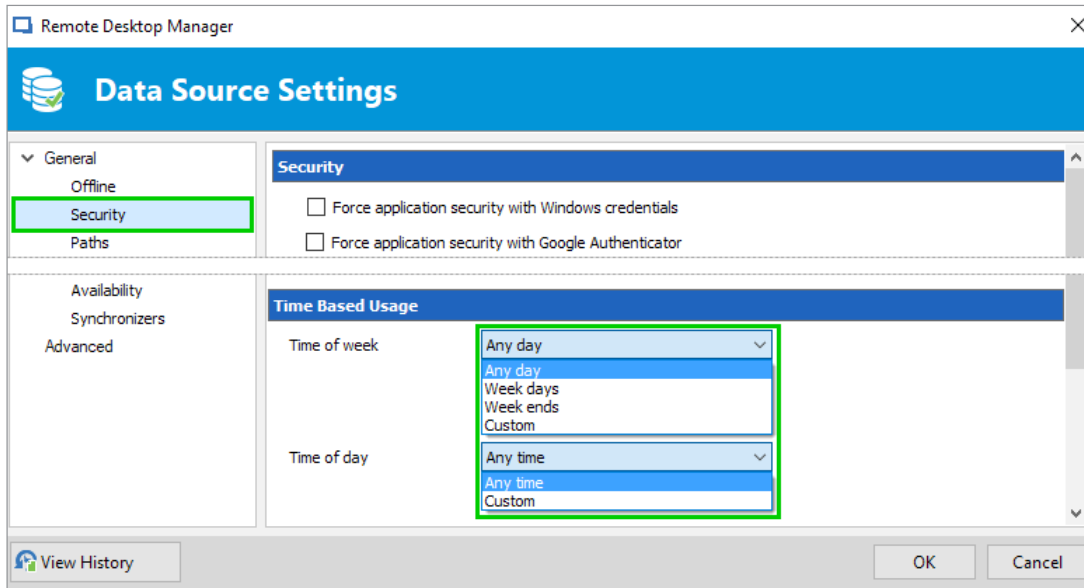


As shown below, once the time-based usage feature is set, any user who attempts to access a restricted session will get a notification informing them that it cannot be opened:



## Default Settings

The time-based usage feature also supports **default settings**. Once set, all sessions with the time-based usage settings set to **Data Source Settings** will **inherit the values set in the Data Source Settings**.



We hope you enjoy this new feature and that it helps you save time and effort — while improving security and governance. Please share your feedback below, or [email me directly](#) with your comments and I'll make sure that our development team gets them.