



## New Remote Desktop Manager Integration: Sticky Password

### *Devolutions*

---

**SOMETIMES,  
STICKY ISN'T MUCH FUN,  
BUT OTHER TIMES,  
STICKY IS WONDERFUL**

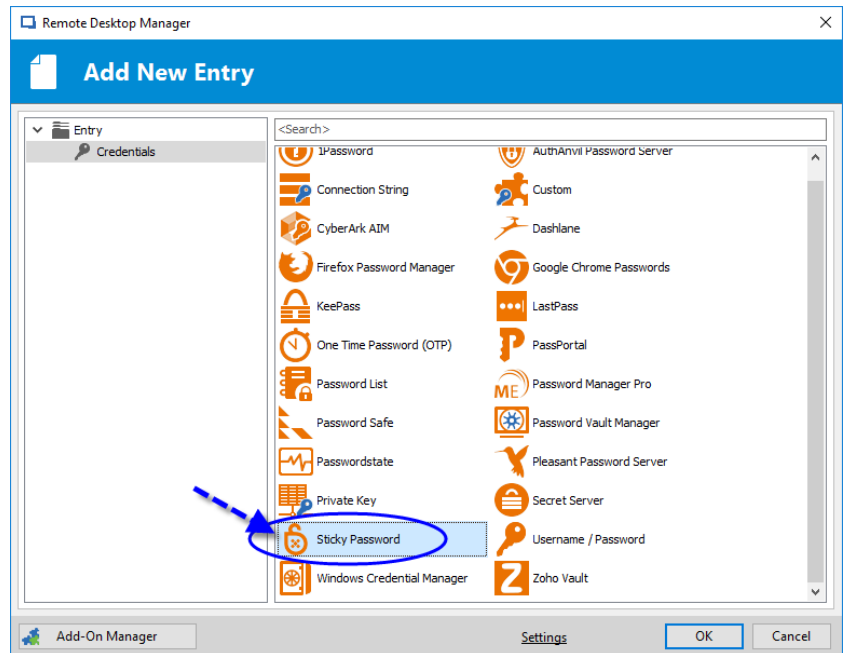
---

Sometimes, sticky isn't much fun, like if you step on a wad of gum in your new shoes (and since I wear high heels, this could be catastrophic). But other times, sticky is wonderful, like if you're taking advantage of RDM's new integration with Sticky Password!

Sticky Password is a simple-to-use tool that lets you remember a single password instead of dozens of them. With Sticky Password, everything is automatically filled in by the password manager. There are multiple syncing options via WiFi without using the cloud, and there's a powerful new biometric authorization feature as well.

# Integrating your [Sticky Password](#) account into Remote Desktop Manager is fast and easy. Here's what to do:

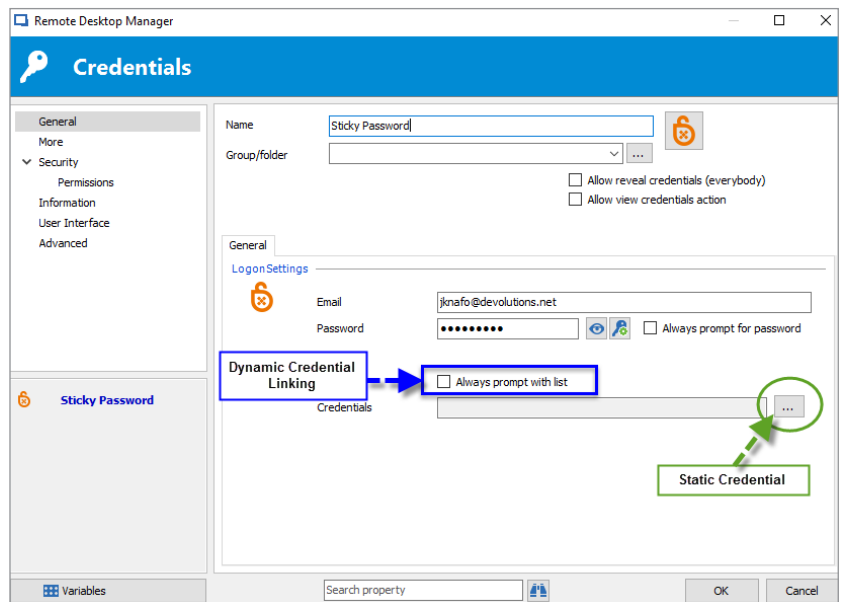
1. Start by adding a new credential entry, and then select **Sticky Password**.



2. Next, enter your Sticky Password account email address and password to connect.

3. From here, you have two options: you can use Static Credential Linking or [Dynamic Credential Linking](#). Here's a rundown of both options:

- **Static Credential Linking** links your entry to a specific credential that is stored in your Sticky Password account.
- **Dynamic Credential Linking** grants you direct access to your Sticky Password credential list every time you connect. This creates a bridge between RDM and Sticky Password, which makes it even easier for you to create just one credential entry to be used for multiple sessions.



And that's it. You're ready to start enjoying all the benefits of Sticky Password and Remote Desktop Manager working together! As always, please let us know your thoughts by using the comment feature of the blog. You can also visit our forums to get help and submit feature requests, you can find them [here](#).