



## [THE BASICS] Caching in Remote Desktop Manager



---

**JOINING THE DEVOLUTIONS  
AFFILIATES PROGRAM IS A FUN AND  
EASY WAY TO GET SOME  
EXTRA CASH!**

---

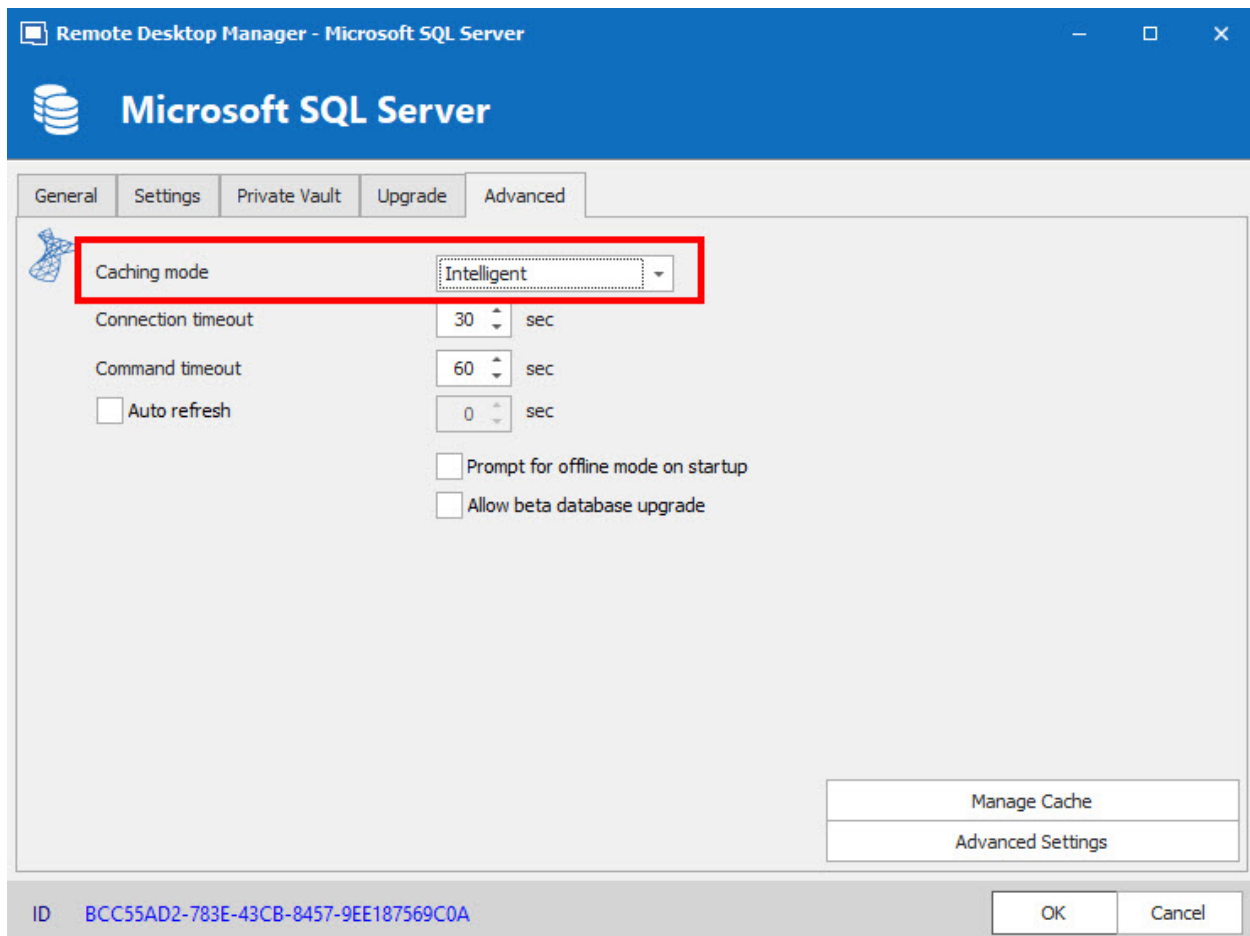
Cash: now that's a word we all know, and of course we all wish we had more of it (speaking of which, joining the [Devolutions Affiliates](#) Program is a fun and easy way to get some extra cash!). But today, we're not focusing on cash. We're focusing on caching with Remote Desktop Manager.

## About Caching

When changes are detected, the caching mode in RDM determines how the client will refresh the content of the data source. On large data sources caching is essential as it increases performance significantly.

## How to Configure Caching Mode

When using an Advanced Data Source, you can access RDM's caching mode option via **File – Data Sources – Edit Data Source – Advanced tab**.



Then, you have three caching modes from which to choose:

**Disabled:** No client caching.

**Simple:** When RDM performs a refresh, it will compare the local cache token with the data source token. If changes are detected, the entire data source will be reloaded. Simple caching is the legacy caching mode. We **do not recommend** this setting when you are using data sources that contain many sessions, as performance may suffer.

**Intelligent:** Each modification performs a token update on the server. When RDM performs a refresh action, it queries the data source for any changes that have taken place since the last check. If changes are detected, they are sent to the application and applied locally. Intelligent caching has the capacity to handle many sessions without triggering performance degradation.

## **And That's It!**

Like I said, caching in RDM is not as life-changing as winning the lottery. But if you have a large data source, then caching (either simple or intelligent) ensures that RDM is optimized and works to its full potential.