



## Zoho Vault Now Integrated into Remote Desktop Manager

### *Devolutions*

---

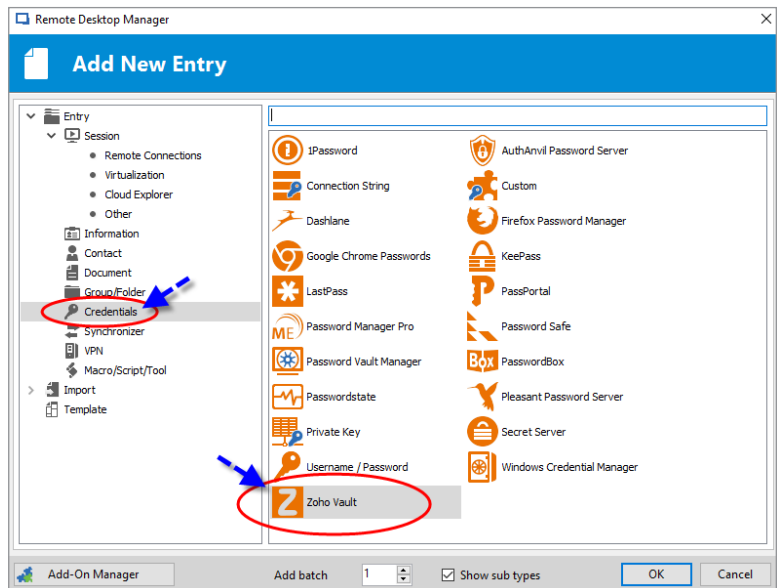
If you're an experienced RDMer, you know that you can integrate a range of popular password management tools into Remote Desktop Manager, such as KeePass, 1Password and so on.

Today, I'm happy to announce that we've added a new member to the family : **Zoho Vault!**

---

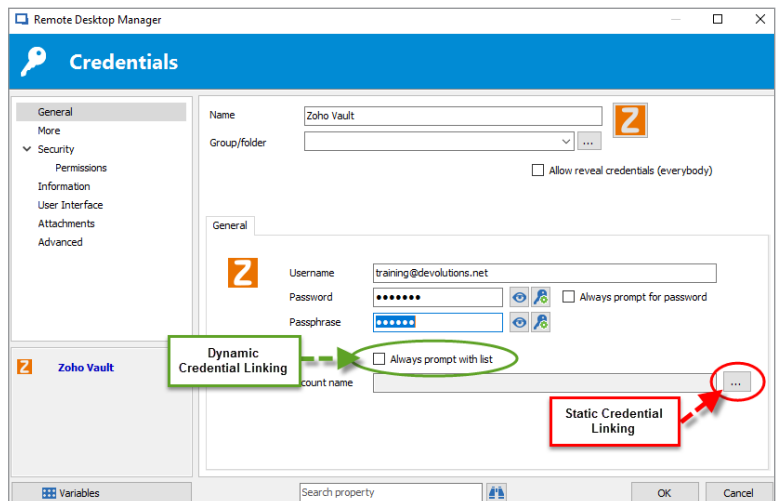
# Integrating your Zoho Vault account into Remote Desktop Manager is easy. Here's what to do:

Start by adding a new entry; select **Credentials**, and then select **Zoho Vault**.



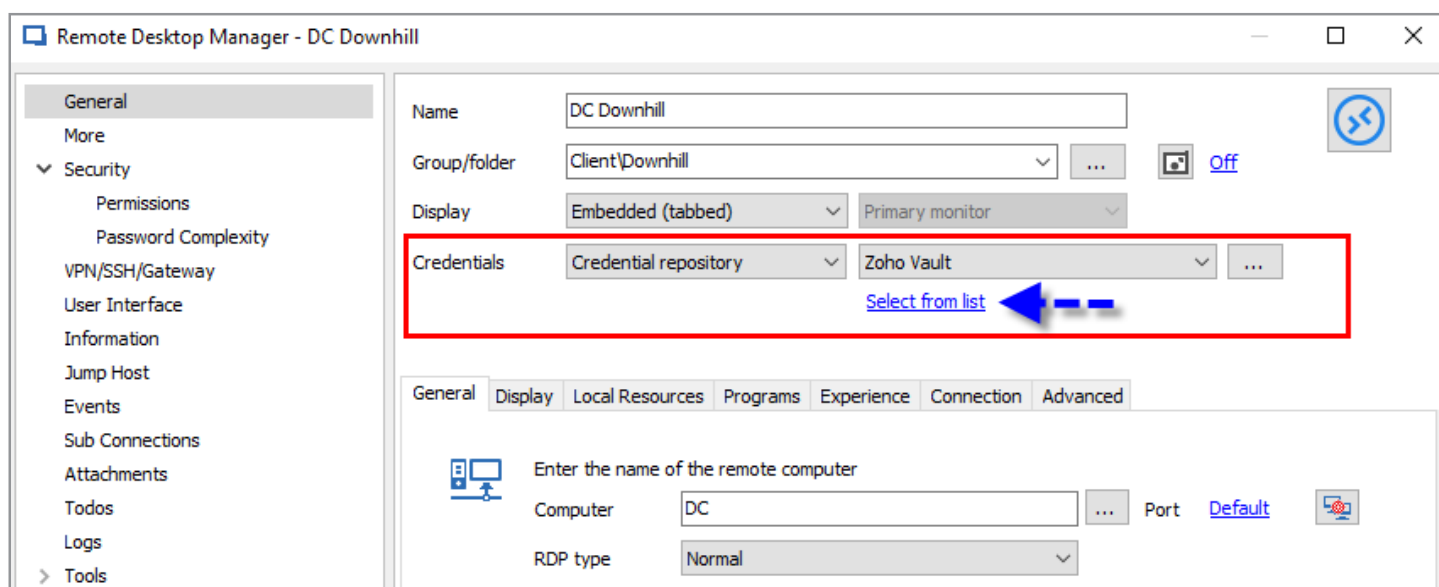
Next, enter your Zoho Vault account username, password and passphrase to connect.

From here, you have two possibilities, which we can call **Static Credential Linking** and **Dynamic Credential Linking**.



**Static Credential Linking:** Click on the **ellipsis** next to **Account name** to link your entry to a specific credential in your Zoho Vault account.

**Dynamic Credential Linking:** Select **Always prompt with list**. With this option, once your Zoho Vault credential entry is linked to a session in RDM, you'll notice a blue link, **Select from list**. This link will grant you direct access to your Zoho Vault credential list every time you connect, thus creating a bridge between RDM and Zoho Vault. You then simply have to select the proper credential for your session.



And that's it! You're all set up! As always, please let us know your thoughts by using the comment feature of the blog. You can also visit our forums to get help and submit feature requests, you can find them [here](#).